

## RxSpotlight<sup>®</sup> for Windows

- True hybrid drawing editor
- Raster is objects
- Full color and grayscale support
- Unlimited workspace
- Automatic raster to vector conversion
- User definable application environment
- OLE automation
- VisualBasic VB-Script support
- Triple platform support for Windows, AutoCAD and AutoCAD LT

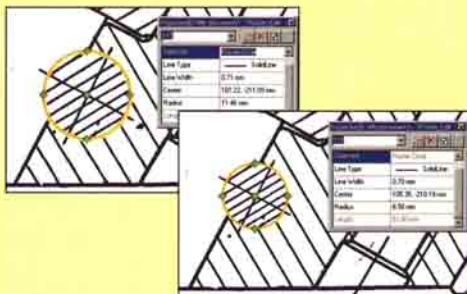
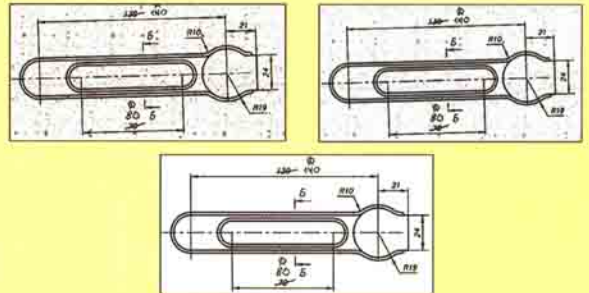
### RxSpotlight for Windows

RxSpotlight is the first true hybrid drawing editor and powerful raster-to-vector converter for any type of scanned raster images: color, grayscale and monochrome.

Using RxSpotlight, you can clean-up, edit, update and convert to vectors scanned drawings, sketches, maps and other graphics. RxSpotlight for Windows introduces true CAD-style editing of raster images.

### Raster correction tools

RxSpotlight offers a wide range of features to enhance color and monochrome raster images, such as deskewing, color and monochrome filters, color correction, deskewing, four-point correction, elimination of linear and non-linear image distortions, cropping, rotation, and resizing, etc. You can correct images using a specified set of commands with one click.



### Raster Objects and Hybrid Graphics

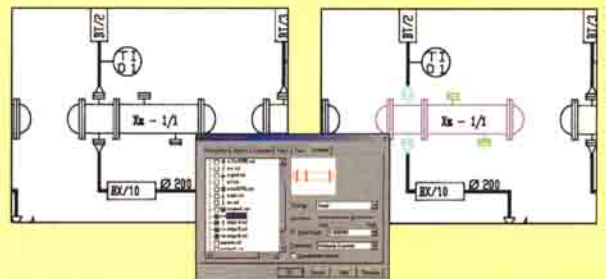
RxSpotlight hybrid technology enables you to use the same tools to select both vector and raster objects (raster lines, arcs and circles). Both raster and vector objects have properties (line type, width, marker type, etc.) and precise geometry which you can change in the properties dialog. You can also modify the geometry of raster and vector objects geometry by their "grips". RxSpotlight treats raster and vector graphics in the same way - as true "hybrid" graphics.

### Symbols

RxSpotlight can recognize arbitrary raster symbols by matching them against predefined templates. Recognized symbols can have a different scale and arbitrary rotation angle. The program can be easily trained to recognize new symbols. Templates can be added to the libraries.

### Layering of color images

You can separate color and monochrome images into separate monochrome layers for further editing or raster-to-vector conversion.



# RxSpotlight<sup>®</sup>

for Windows

Rasterex is represented in over 50 countries worldwide. To locate your nearest Rasterex office, distributor or dealer, visit our web site at

[www.rasterex.com](http://www.rasterex.com)

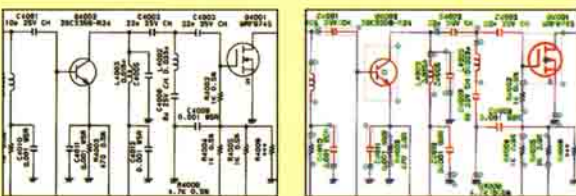
## Semi-automatic raster-to-vector conversion (tracing)

To convert a raster line, symbol, arc, circle or outline all you need to do is click a point on the source raster object. Various trace modes are available - retain, erase, or smooth the original raster. The program can also recognize raster hatches and trace arbitrary raster curves by polylines. When tracing polylines, the program can automatically define the most probable trace direction. You can trace monochrome, color and grayscale images.



## Automatic raster-to-vector conversion (Pro version)

Improved algorithms for automatic raster-to-vector conversion allow the conversion of scanned drawings to



CAD-files, even in a batch mode. RxSpotlight recognizes and converts to corresponding vector objects raster lines, arcs, circles, symbols, points, polylines, outlines and hatches. The program also recognizes line types, weights and dimension arrows. Resulting vector objects can be distributed by weight, layers and color.

The built-in OCR module recognizes texts on drawings. You can also use external OCR modules. The program can be taught to recognize new text characters.

## Vector enhancement tools (Pro version)

You can correct vectorization results using the automatic (merging fragments, correcting intersections, removing low-sized vector objects, aligning lines, etc.) and interactive (merging specified fragments) correction procedures.

## Automation

The Script Studio and Batch Studio help you to create complex image and vector processing scripts. You can also use the internal script language, OLE/DDE interface and VB script support to execute RxSpotlight commands or to communicate with other applications.

## Flexible User Interface

The RxSpotlight Interface is fully customizable - you can organize your own working area by creating new menus, toolbars, context menu, hot keys and by removing unnecessary commands and buttons. The multi-document (MDI) interface support enables you to load and process multiple documents at the same time.

Raster formats

Import

Export

Interface

Enhancing and editing raster images

Calibration (eliminating non-linear distortions)

Additional features for processing color images  
Selecting raster data

Editing raster and vector data

Vector editor

Modes for precise drawing

Interactive vectorization (tracing)

Automatic vectorization (for Pro-version)

Text recognition (for Pro-version)

Correcting vector objects resulting from vectorization (for Pro-version)

Automation

System requirements

TIF (TIF-Multipage), RLC, BMP, JPG, JPEG, PCX, C4, CT4, CAL, CG4, GP4, MIL, TG4, T4, TIFF WORLD FILE

DWG / DXF (AutoCAD 2002/2000/R14); DGN; WS, VC4, VC5 (Spotlight 3.X/2.X); support for external import filters

DWG / DXF (AutoCAD 2002/2000/R14); MID (MapInfo); WS, VC4, VC5 (Spotlight 3.X/2.X).

MDI, Customizable User Interface, Birds Eye, Split views, UCS wizard.

**Color filters:** blur; unsharp mask; median. **Monochrome filters:** speckle remover; hole remover; thickening; thinning; smoothing; inversion; contour.

Deskewing; 4-point correction; changing size and resampling; cropping; rotating; mirroring. Autocorrecting images. Drawing on raster mode; rasterization of vector objects on color, monochrome, and grayscale images; merging color, monochrome, and grayscale images; monochrome and color floodfilling.

Calibration by grid and/or arbitrary set of points, accuracy estimation. Calibration methods: Grid adaptive bilinear, Line conformal, Affin, Bilinear, Polynomial 2 - 6 degrees, Surface splines. Automatic choice of the optimal method.

Conversion to RGB, Palette, Grayscale. Color reduction; equalizer; tuning brightness, contrast, hue, etc. Binarization, color separation.

Using vector technology to select raster data on monochrome, grayscale or color images: by picking (with automatic definition of object type); within window or polygon; by crossing rectangle, polygon or fence, etc. Raster symbols selection (on monochrome images).

The uniform technology for editing properties and geometry of vector and raster objects. Moving, copying, duplicating, rotating, scaling, mirroring, aligning, offset, array, merging, etc.

Drawing points, lines, circles, arcs, polylines, rectangles with various line types and thickness; text and multiline text; named blocks; customized arrows and floodfilling forms. Creating Chamber and Fillet. Measure tool. Expanding, cropping, breaking, rounding, correction of intersections, align angle and distance, etc. Editing polylines.

Snapping to characteristic points of raster and vector objects with snap type marker and tooltips. Polar snap, orthogonal drawing, snapping to grid, fixed moving step.

Tracing raster lines, arcs, circles, polylines, outlines, hatches on monochrome, grayscale or color images. Tracing symbols (on monochrome images). Auto detect the direction of polyline tracing; orthogonalization of lines and polyline segments.

Recognition of raster symbols, lines, arcs, circles, polylines, contour objects, points, hatches. Recognition of line types, width, arrows. Separation of resulting vector objects by layers, widths and colors. Standard and user defined vectorization templates. Recognizing Preview.

Recognition of texts of arbitrary orientation, digits, punctuation marks, special characters. Training to recognize new characters. Support for external OCR modules.

Automatic correction: restoring of intersections, aligning, joining fragments, removing low-sized vector objects. Interactive correction: joining fragments to line, arc, circle, polyline. Correction of recognized texts.

Batch and Script Studio; DDE; OLE Automation; VB Script Site.

Windows 98, Windows NT 4.0, Windows 2000, Windows XP, Pentium 166MHz or higher, 32 MB RAM or higher, 50 MB on hard disk, SVGA with resolution 800x600 with 256 colors or more.



Rasterex Software a.s.

P. O. Box 124 Sentrum - 0102 Oslo, Norway

Tel. +47 (22) 91 00 90

Fax +47 (22) 91 00 91

E-mail: [sales@rasterex.com](mailto:sales@rasterex.com),

Internet: [www.rasterex.com](http://www.rasterex.com)